

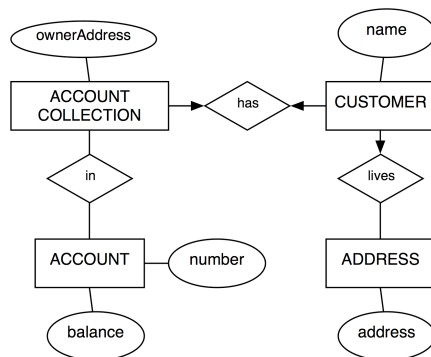
# Database Systems, fall 2006

Rasmus Pagh

## Exercises for lecture on September 5

1. (Introductory.) Below you find an ER diagram for account and customer information in a bank. The diagram models that any customer has a collection of one or more accounts. Criticize the diagram and suggest changes. Start with the following questions:

- Do the entity sets reflect reality?
- Can you simplify the diagram? For example, check for:
  - Duplicated information.
  - Entities that should be attributes.



2. (Introductory.) Exercise 2.4 in RG.
3. (Intermediate.) Exercise 2.5 in RG.
4. (Advanced.) Exercise 2.7 in RG.

Note that you can check solutions for odd-numbered exercises at the book's website. However, we encourage you to (also) seek feedback on your solutions from the teaching assistants.