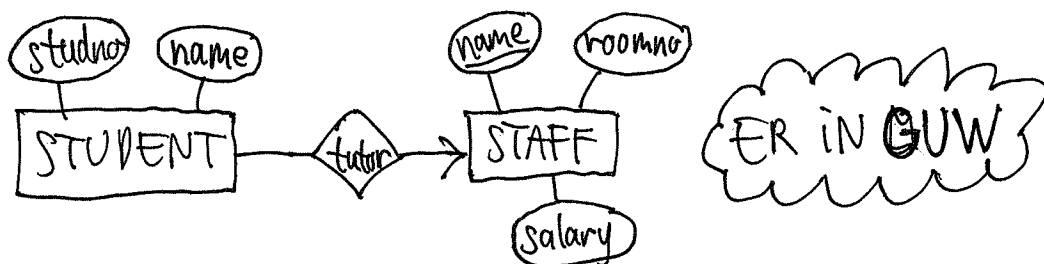
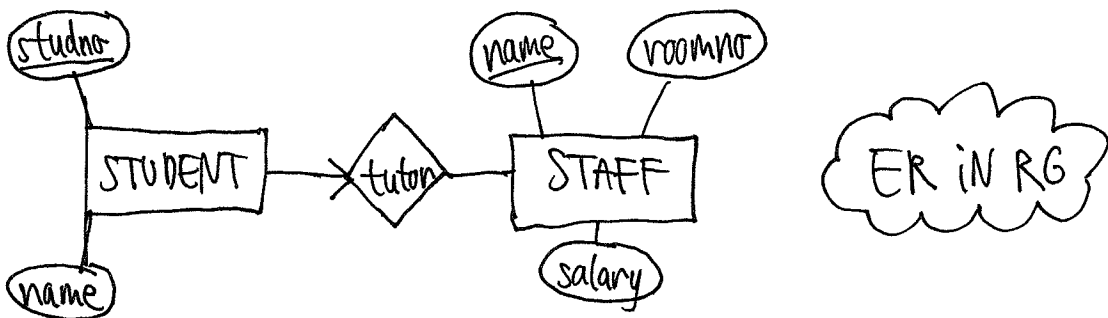
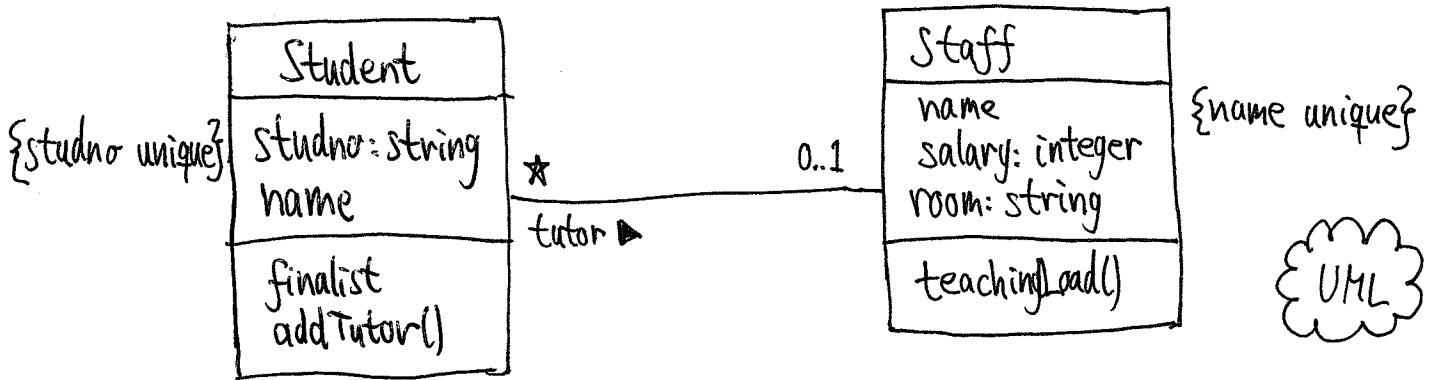
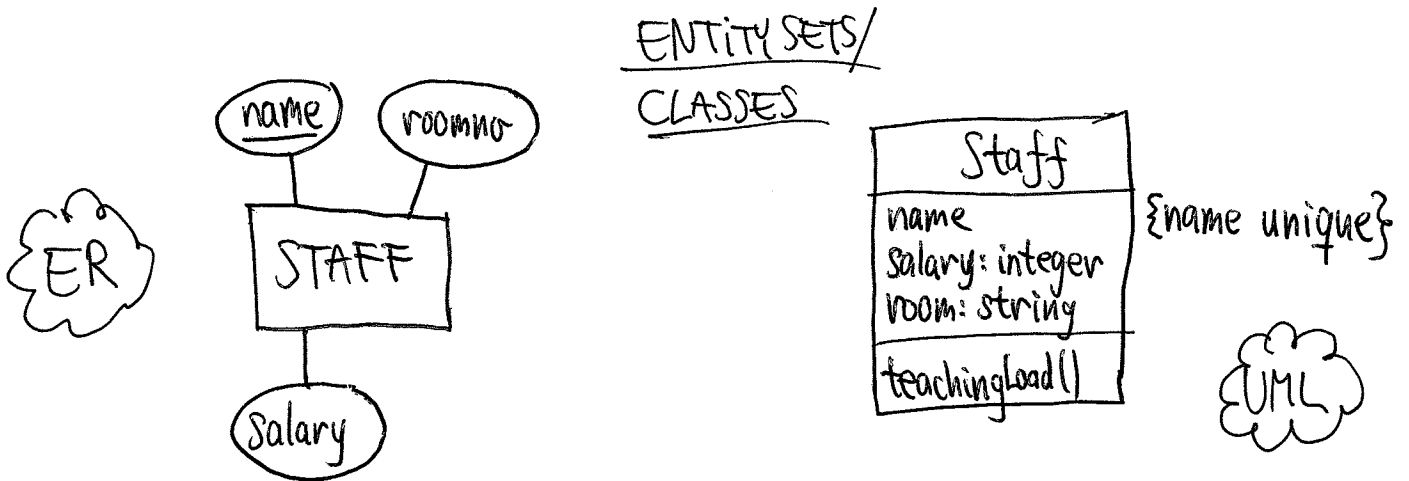


ER VARIANTS AND UML BY EXAMPLE



MANY-ONE-RELATIONSHIPS

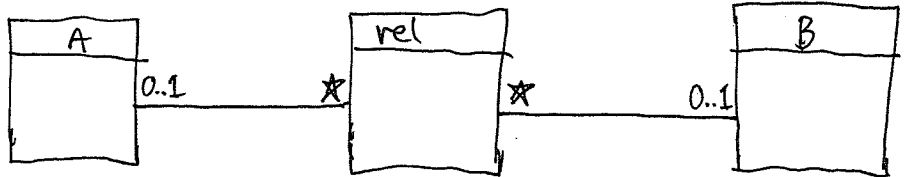
MANY-MANY RELATIONSHIPS

ER IN
RG & GOW



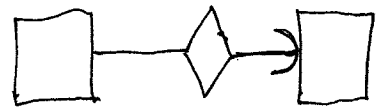
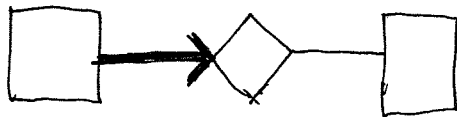
CHEN
ER

UML



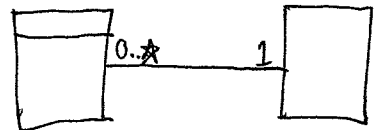
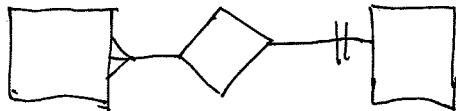
PARTICIPATION CONSTRAINTS

ER IN
RG



ER IN
GOW

CHEN
ER



UML

WEAK ENTITIES AND IDENTIFYING RELATIONSHIPS



ER IN
RG

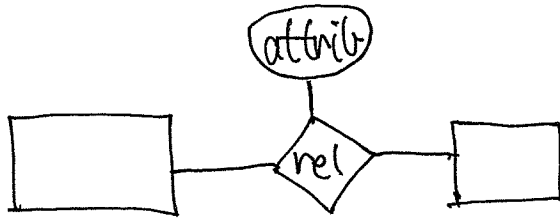


ER IN
GOW & CHEN

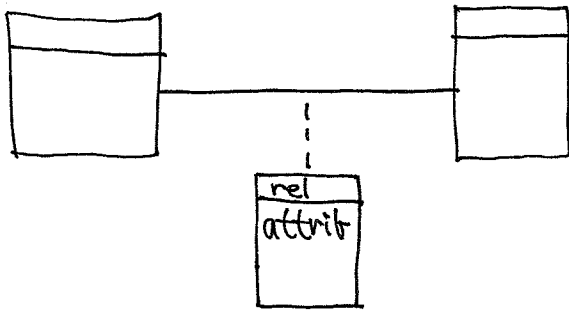
NONEXISTING,
A KEY MUST
ALWAYS EXIST

UML

ATTRIBUTES ON RELATIONSHIPS / ASSOCIATION CLASSES



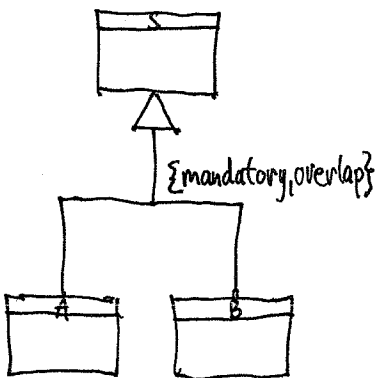
ER



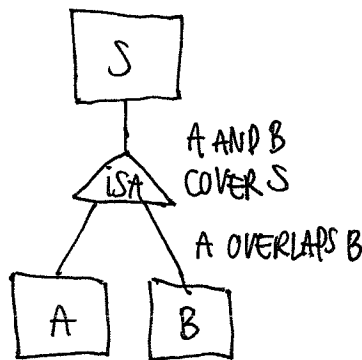
UML

GENERALIZATION HIERARCHIES

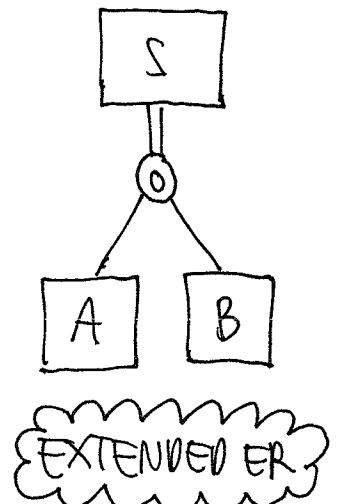
FULL SPECIALIZATION WITH OVERLAP:



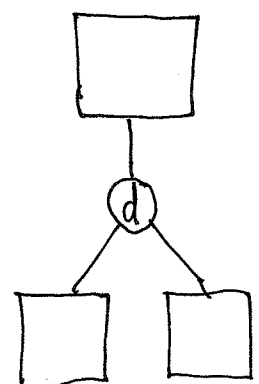
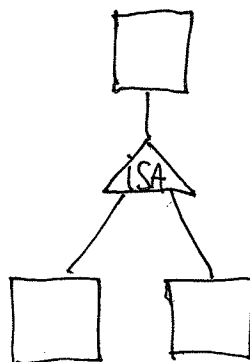
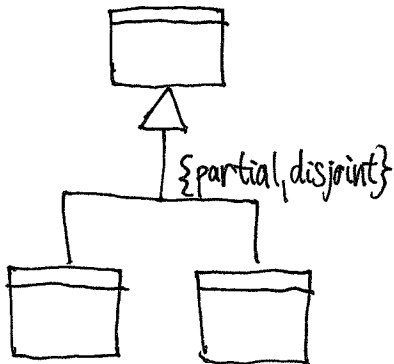
UML



ER IN RG



EXTENDED ER



PARTIAL SPECIALIZATION WITH NO OVERLAP ↗